

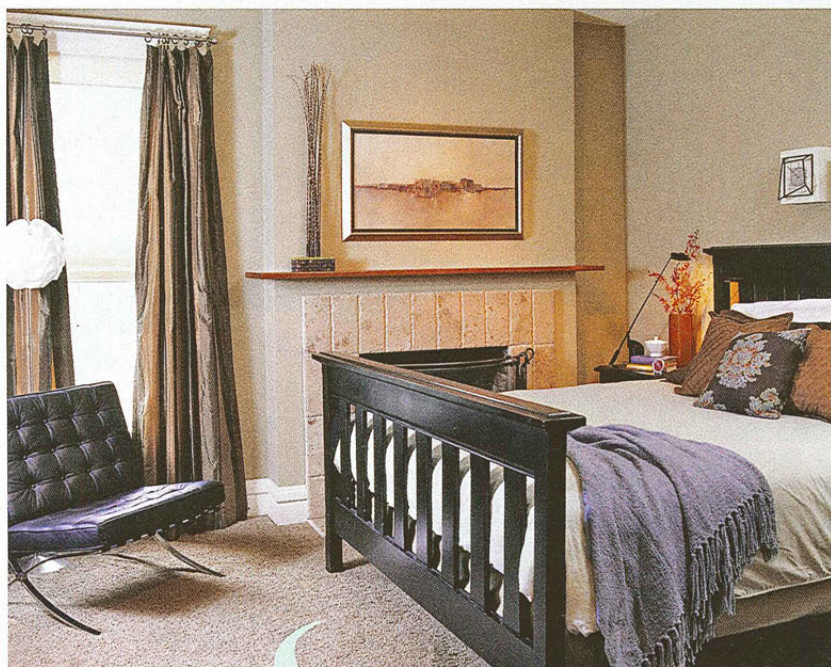


top left: Irons worked with the existing wall color in the master bedroom to create a serene setting for sleep. She added the sleek mantle to break up the space a bit and integrated the modern chair by hanging a small piece of contemporary art over the bed.

top right: In the library on the second floor, Irons created a "man's room" with dark, comfortable furnishings and uncluttered art displays that seem to have grown organically. "Don't just rush out and try to fill up your bookcases," Irons says. "Take your time. When you see something you like, pick it up."

left: Irons transformed unused space in the attic into a meditation room with soft, simple furnishings. It turned out to be her favorite space, she says. "It just made a dark, dingy attic into something bright and cheerful."

For a list of resources, see page 110.



DESIGN DETAILS

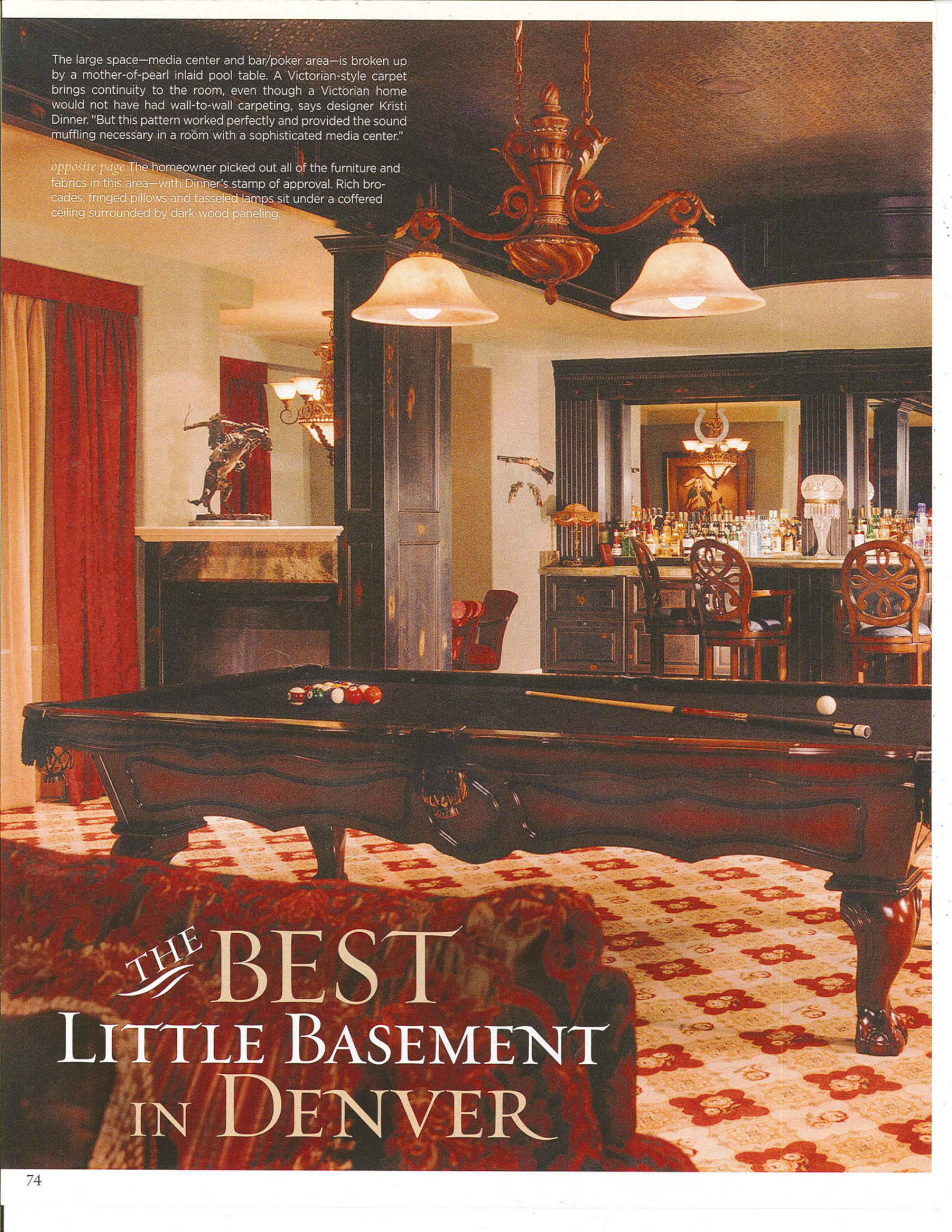
INTERIOR DESIGN, **MARRION IRONS**

Free Modification, Inc., Denver

(303) 246-4842, Freemodification.com

The large space—media center and bar/poker area—is broken up by a mother-of-pearl inlaid pool table. A Victorian-style carpet brings continuity to the room, even though a Victorian home would not have had wall-to-wall carpeting, says designer Kristi Dinner. "But this pattern worked perfectly and provided the sound muffling necessary in a room with a sophisticated media center."

opposite page The homeowner picked out all of the furniture and fabrics in this area—with Dinner's stamp of approval. Rich brocades, fringed pillows and tasseled lamps sit under a coffered ceiling surrounded by dark wood paneling.



The photograph captures a sophisticated basement interior. In the foreground, a large, dark wood pool table with a mother-of-pearl inlay top sits on a patterned carpet. A pool cue and a ball are on the table. In the background, a bar area with a dark wood frame and a mirror is visible, stocked with various bottles. To the left, a fireplace mantel holds a statue. The room is lit by ornate, tasseled lamps hanging from a coffered ceiling. Dark wood paneling lines the walls, and a large window is covered with red curtains.

THE BEST LITTLE BASEMENT IN DENVER



EVERYTHING
about this space reflects
the homeowner's
Western-inspired vision.



FOR ROB SMITH, the design vision was crystal clear. The lower level of his large southwest Denver home (known as "his" space) would be transformed into an 1890s San Francisco saloon—with high-tech amenities, of course. He envisioned relaxing here at the end of the day, much like his childhood hero, Paladin, from the popular TV series *Have Gun, Will Travel*. "I knew exactly what I wanted design-wise," Smith says. "I also knew how much I wanted to spend and when I needed it done." To his good fortune, he got all three.

After working with the Smiths on the rest of the house, designers Kristi Dinner and Beth Armijo of company kd understood Rob's vision, even though he never once showed them a picture. "We had to think colors first," Armijo says, "and a bordello would've been dark woods and deep reds." Textures and patterns would also play a key role—brocades, chenille, cowhide, distressed leather, along with fringes and tassels galore—from the couch skirt to several lampshades.

Though designed to look old, everything in the lower level is new to the space except for the poker table. Rob personally picked out much of the furniture, shopping at local stores to stay within his budgetary constraints. He splurged on his toys—such as the 70-inch Sony home theater ▷

BY SALLY STICH PHOTOGRAPHY BY EMILY MINTON-REDFIELD

Forget Paladin.
Rob Smith's motto
is much better:
"Have room, will party!"



at one end of the room, a gorgeous mother-of-pearl inlaid poker table that divides the space and his roomy horseshoe-shaped granite bar at the opposite end.

What holds the room together is the Victorian-style carpeting—a pattern of flowers in squares—that serves more than merely decorative purposes. "In a room with a media system like Rob has," Dinner says, "we had to think of acoustics, too. A soft floor was the way to go, even though in Victorian times, people didn't generally have wall-to-wall carpeting."

Smith was also interested in installing a ceramic hexagonal tile floor at the entrance to his saloon. Dinner steered him toward a black floor with white centers (rather than the ubiquitous white with black), but finding this product wasn't so easy. Finally Smith bought 12-inch squares of all-black hexagonal tiles and had the tile installers pop out center black tiles and replace them with white tiles. It was labor-intensive but definitely worth it.

Smith loves his room so much that he comes down every afternoon from 4 to 6 to relax by watching sports or old Westerns. Sometimes he moseys over to the bar (called the "Horseshoe Saloon") and pours himself a drink. Sometimes he adjusts the lights so they are low and sexy as daylight turns dark. But all of the time, he thanks his lucky stars for having a wife who said, "Do whatever you want." And he's also grateful for a design team who came in on time and on budget. Forget Paladin. Rob Smith's motto is much better: "Have room, will party!" □





Clockwise, from the top of the opposite page:

The only piece of furniture not new to this room is the homeowner's poker table. Designer Kristi Dinner covered the chairs in a deep red chenille to continue the color scheme.

Entered through a glass door that identifies the "Horseshoe Saloon," this wine cellar has cork floors and a cigar-labeled ceiling in deference to the homeowner's love of good stogies.

The goal was a tin ceiling, circa the 1890s. The reality (given the acoustics in the room) was cloth wallpaper, made to look like tin, thanks to high-quality faux painting.

Dubbed the "Cigar Room" (even though the homeowner does not light up inside), this small area is dominated by a painting of a woman whom the owner says reminds him of his wife.

Enter the basement through dramatic glass doors on a hexagonal tiled floor reminiscent of a turn-of-the-century San Francisco saloon.



fresh spaces

FIND INSPIRATION
IN THESE UNIQUE ROOMS



DESIGN DETAILS

INTERIOR DESIGN
SHAYNE SMITH
Slifer Designs
(970) 926-8200
Sliferdesigns.com