



CLOCKWISE FROM TOP LEFT: Amber-color pendant lights suspended from the soffit contrast with the cool color palette, providing just the right level of warmth.

Below the cabinets, a 12-foot-wide window doubles as a clear backsplash while infusing the once-dark space with sunlight.

Open shelving beneath the island prominently displays kitchen favorites.

OPPOSITE: The glass-top table is an extension of the island. It sits in the heart of the cooking and entertaining area but remains just outside the main work zone.



THIS PHOTO: Cool stainless-steel elements mingle with dark-stained wood cabinetry to create a dramatic yet inviting kitchen that's fitting for a midcentury-modern home.

OPPOSITE: Even the outside of the island that faces the eating area boasts functional elements, including two well-disguised refrigerator drawers.

Style Forward

One of the hardest-working rooms in the house, the kitchen deserves to be an attractive, fully functional space. With 1980s laminate cabinets, vinyl flooring, fluorescent lighting, and—perhaps worst of all—wasted space, this kitchen did not live up to its expectations.

A striking combination of rich colors and textures fixed that, injecting the space with a warm personality. Dark walnut cabinets with ribbed-glass inserts complement cabinets fronted by zebra wood doors. Though visibly different, the striped qualities of the ribbed glass and the zebra wood generate a cohesive look.

Borrowing space from an adjoining utility room allowed for a more spacious layout. The move also made room for







THIS PHOTO: Bumping out the back wall 2 feet provided just enough room for cabinetry without altering the roofline. Golden beech cabinets and cool stainless-steel appliances and countertops energize the kitchen.

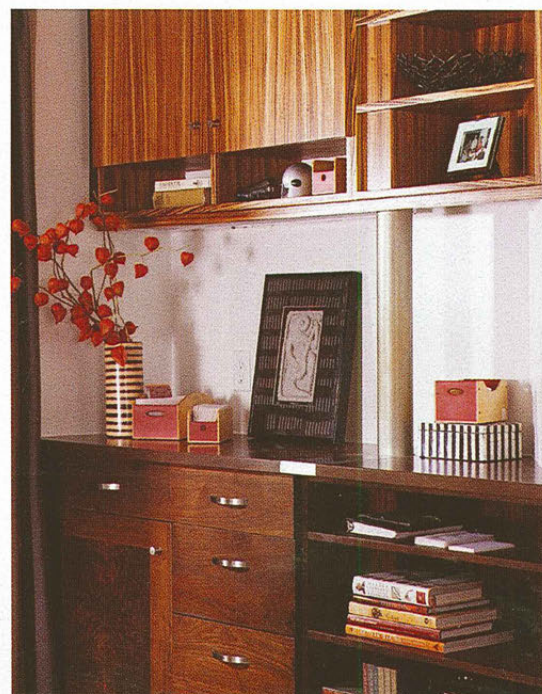
OPPOSITE: Creative use of clear, frosted, and colored glass bridges the style divide between the light wood cabinets and metal countertops, resulting in a cohesive look.

the kitchen's new focal point: a five-sided, two-level island. Featuring a wedge design that accommodates guests and cooks alike, the island epitomizes the kitchen's multifunctional spirit. One side of the island offers storage and display space, while another side houses two refrigerator drawers and a wine cooler. The lower, light granite countertop—the same material is used for the perimeter countertops and backsplashes—provides striking contrast

against the room's dark surfaces.

A large window above the sink ushers in sunlight during the day. Even when the sun goes down, recessed can lights and pendants provide overall illumination and task lighting. Sprinkled around the kitchen, dishes and other small accents lend a powerful boost of color, adding a layer of charm to the hardworking space. **DK**

RESOURCES BEGIN ON PAGE 158.



ABOVE: Located outside the kitchen's work core, this functional command center blends open and closed storage, with zebrawood above and walnut below. Gleaming pulls on the doors and drawers offer a contemporary touch.

LEFT: Cabinets with zebrawood doors alternate with the dark walnut cabinetry. The ribbed-glass panels in the walnut cabinets echo the active lines of the zebrawood.

OPPOSITE: The five-sided island features two levels, allowing guests to sit and mingle with the cooks as they work. The two-tier design also conveniently hides messes on the cooktop side.