



MASTER
BATH

simple serenity

SPACE: 120-square-foot master bath in
6,000-square-foot home, Polo Club

DESIGNER: In-site Design Group

THE BIG IDEA: "Refined details can make even a bathroom elegant."

If this room seems like a calming place to prepare for a high-stress day, it's that way by design. The monochromatic color scheme and expensive finishes create an oasis—no dramatic color shifts to jar the eye and psyche.

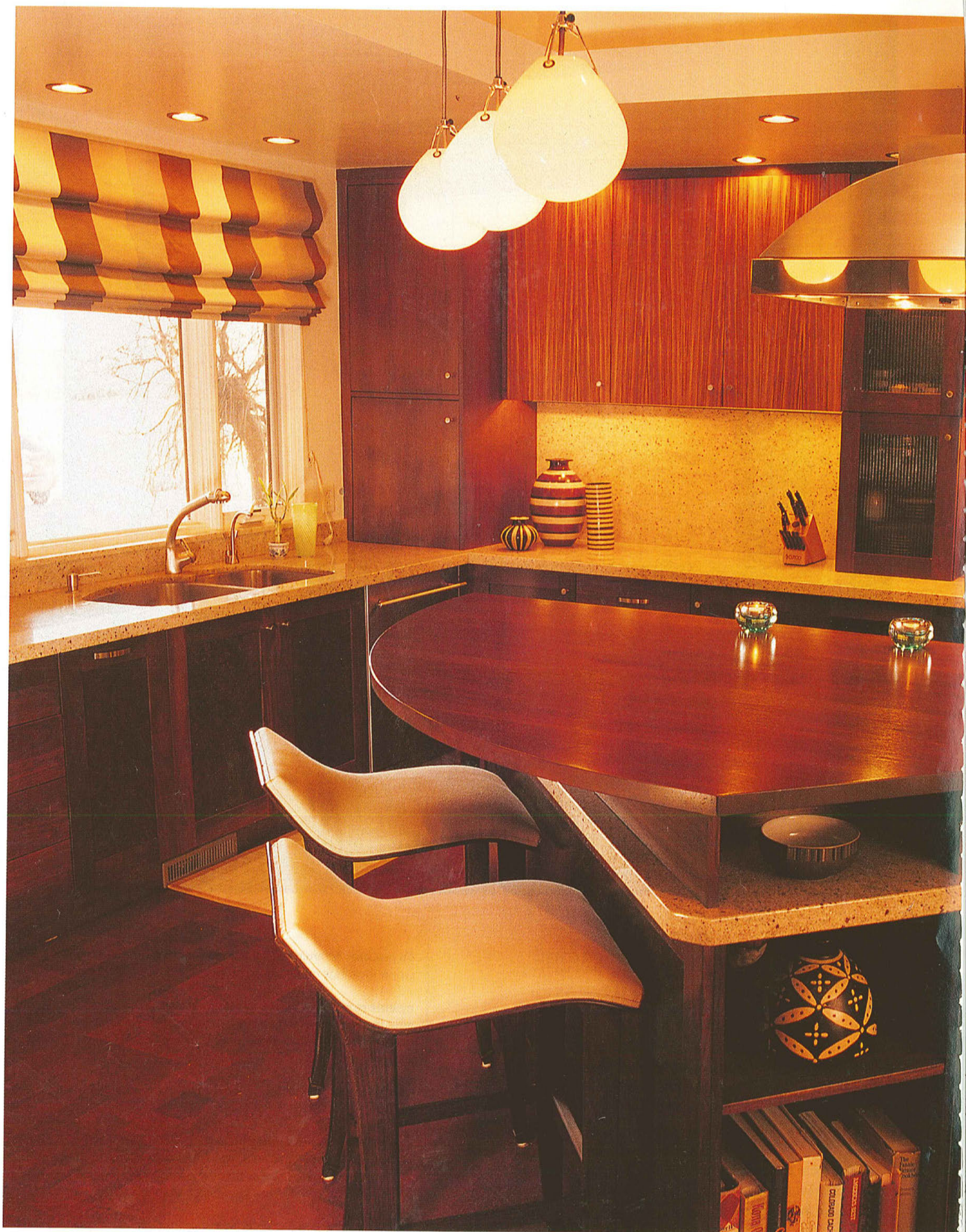
DETAILING: Trimming out the edges of the mirror and the tub with wood moldings might add cost, but it also adds sophistication.

CABINETRY: These base cabinets from William Ohs are trimmed out and finished to match the other detailing. Many people like taller cabinets in the bathroom because they require less bending over for day-to-day tasks.

GLASS BLOCK WALL: Glass blocks in the bath provide both light and privacy.

GRANITE: Using the same granite for the countertops, floors, and shower walls makes this small room feel expansive. The thin, jewel-like, mother-of-pearl inset is the real key to this room and provides an elegant touch. Try tile for a lower-cost alternative.

FIXTURES: The large-scale Kohler sinks provide extra space to wash.



SPACE: 425-square-foot remodel in
3,500-square-foot home, Southern Hills

DESIGNER: KD Design Consultants and Nest Architectural Design

THE BIG IDEA: "We took modern and modernized it."

For the kitchen remodel of this midcentury classic home, the designers used a timeless modernist trick—keep the design so simple that, instead of being overwhelmed with trims and details, you enjoy the sheer beauty of the natural materials.

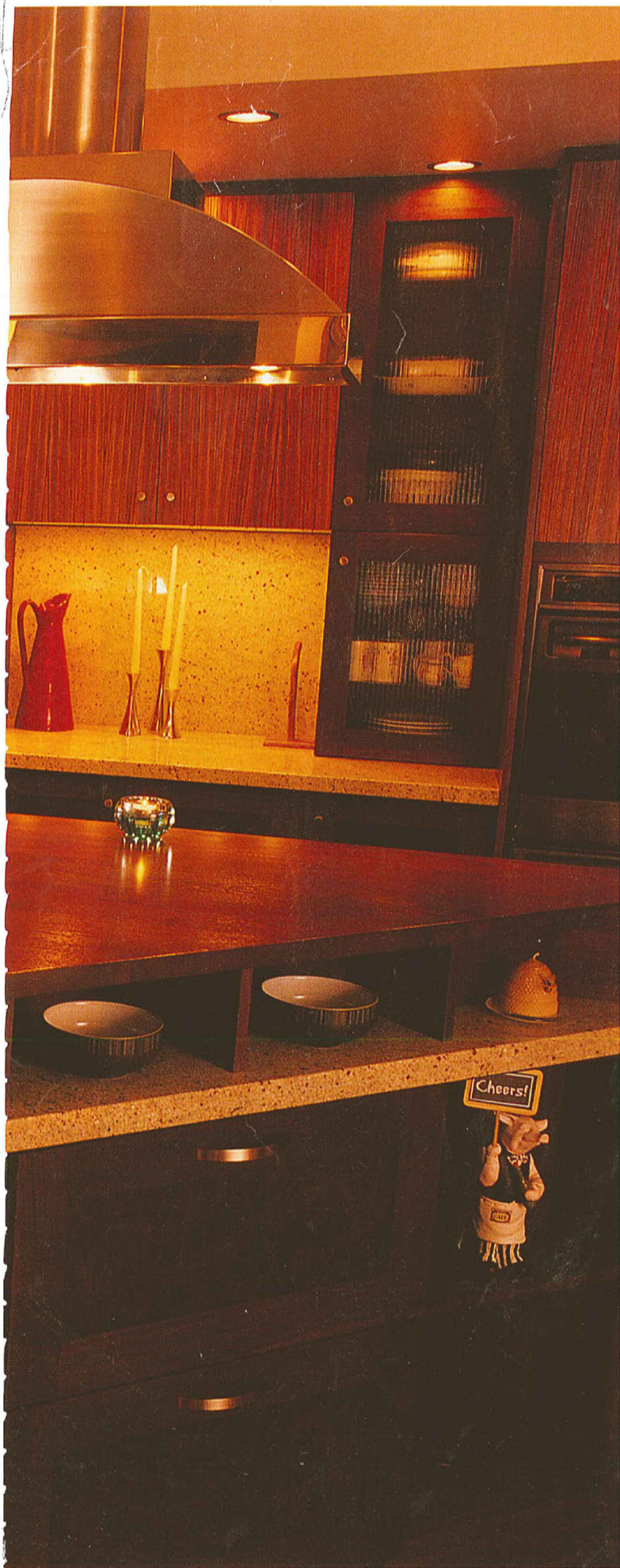
CABINETRY: Walnut, burl walnut, and zebrawood transform the simple cabinets into objects of envy. Horizontal blocks of zebrawood are broken up with glass-fronted verticals. "Seeing the plates and cups brings in a really refined but inviting touch," says designer Kristi Dinner.

CORK FLOOR: Because it's both ecologically friendly and soft underfoot, cork flooring is growing in popularity. It comes in a broad range of earth-tone colors and prices, as hardwood does.

GRANITE COUNTERTOPS AND BACKSPASH: The Kashmir white granite by Victor Marble brings the off-white color and mottled texture of the existing terrazzo floor in the entryway into the kitchen. If you're on a budget, use granite tile, not slabs.

COLOR: The two wildly contrasting colors of wood and granite complement and accentuate each other.

ISLAND: The "piece-of-pie" island features a fridge for visitors on the great-room side, and a pair of Axis Furniture stools from John Brooks for breakfast.





OFFICE

attractive partnership

SPACE: 110-square-foot office in 3,000-square-foot home, Lowry

DESIGNER: KD Design Consultants and Nest Architectural Design

THE BIG IDEA: "We maximized the space to minimize the arguments."

A contemporary update on the age-old partners' desk lets this adventurous couple share their passion for working together. The blue walls and wood built-ins make for a subtle complementary color scheme.

DRAPERIES: The sheer fabric from Osborne & Little cuts the glare while preserving the sense of light and openness. A Donghia over-drape darkens the room when needed, while the pattern coordinates with the other finishes in the room.

DESK: The wood and steel partners' desk is large enough for two people to work comfortably. Light-toned zebrawood creates a lively contrast to the darker wenge wood of the built-ins, while its darker stripes help tie the woods together.

DESK CHAIR: With these Life chairs from Knoll, each partner can adjust his or her seat and back to fit. They come in dozens of standard fabric selections.

STORAGE: Inexpensive square baskets from Pottery Barn satisfy both filers and pilers.

COLOR: All the primary spaces of this home have dark-stained oak floors and highly colored wall surfaces. Using the dark flooring anchors the room and unifies the spaces. The designer prefers blue in an office environment because it's soothing and aids productivity.