



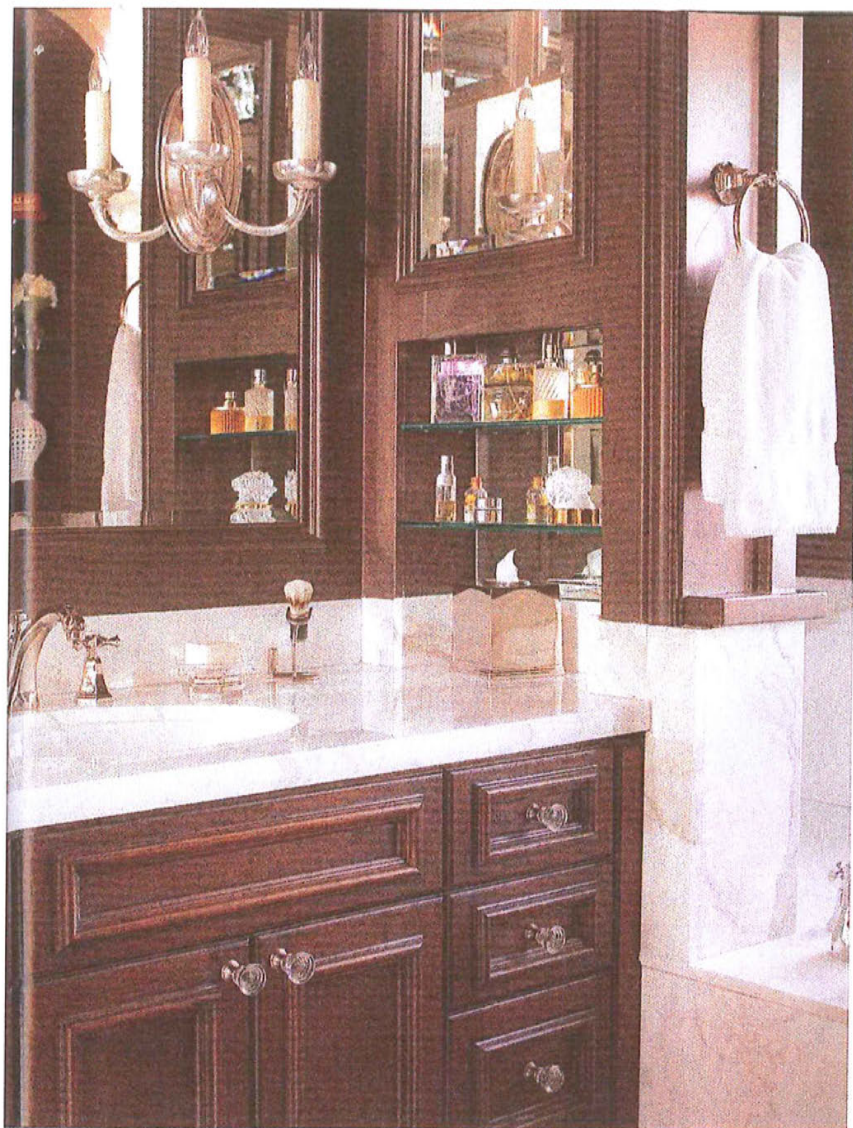
PLAYFUL PROVENCE

PHOTOGRAPHY BY EMILY MINTON REDFIELD

DESIGN GOAL: The husband-and-wife homeowners had ideas about what they wanted in this European-style galley kitchen: She wanted the kitchen to work with the rest of the Mediterranean-style home. He, the primary cook, wanted functionality. Designers Beth Armijo and Kristi Dinner of Company kd considered these goals and went to work, delivering efficient use of space, a user-friendly design and charming details.

DEFINING DETAIL: The refurbished cabinets, full of texture and charm. The designers gathered inspiration from fine furniture and worked with a decorative painter to give the existing wood a makeover: They removed the raised panels, used layers of red and gray paint to lend a storied texture to the wood and introduced chicken-wire panels to bring Old World character. "I get bored when I see just steel cabinet doors," Dinner says. "To be able to see the textures of all of the dishes stacked on top of each other, it combines old and new. It really adds a lot of charm."

WHY IT WORKS: Reusing the cabinets was in good taste economically and environmentally, but the designers also had the frames retro-fitted to accommodate the husband's culinary needs: Smart engineering made it possible to install an appliance wall, spice pull-outs and a new wine fridge, among other state-of-the-art appliances. And his wife could relish the design's Mediterranean flavor, also captured in garnet flecks in the countertop, punches of color in the appliances, the Terrazzo tile floor and what Dinner says is a real "showstopper" in the space—the vibrant glass-tile backsplash that is practical, but also brings some pizzazz. □



DESIGN GOAL: The owners, husband and wife, each had definite ideas about how the master bath in their newly built, Mediterranean-style home should look. He wanted a masculine feel; she wanted some feminine touches. Kristi Dinner and Beth Armijo of Company kd (Companykd.com) collaborated with architect Carlos Alvarez of Alvarez/Morris (AlvarezMorris.com) and builder P.J. Rinker of Lexa Custom Homes to create a bath that achieves a strong, classic look and satisfies both owners.

DEFINING DETAIL: The mirrors. "When you look into the mirror, you see the mirror behind you, and it gives the illusion that the space is never-ending," Dinner says. "It's a beautiful feature."

WHY IT WORKS: The thoughtful use of classic, timeless materials, combined with smart space planning, makes this bath a beauty. "From an architectural standpoint, it's probably the most interesting room in the home," Dinner says. Tall ceilings add drama to the room, and exquisite details give it a one-of-a-kind feel. "We painted the molding dark, which provides a masculine element. The white, creamy marble with sensual veins adds that feminine side," Dinner explains. "The contrasts work." □

OLD WORLD, RENEWED

PHOTOGRAPHY BY EMILY MINTON REDFIELD

